



Request for Proposal for Hosting Referee Training Clinics

Women's Flat Track Derby Association

Release Date: February 10, 2011

Founded in 2004, the WFTDA promotes and fosters the sport of women's flat track roller derby by facilitating the development of athletic ability, sportswomanship and goodwill among member leagues. The governing philosophy of the WFTDA is "by the skaters, for the skaters". Female skaters are primary owners, managers and/or operators of each member league and the association. Operational tasks include standards for rules, season, safety, and determining guidelines for the national and international athletic competitions of member leagues.

I. Overview of Training Goals

The WFTDA is honored to announce the second annual WFTDA Referee Training Clinic cycle. This year's clinics will introduce a wealth of new information, complementing the now institutionalized educational materials that were presented in 2010. The WFTDA will work with member league hosts to ensure the thorough and proper training of all roller derby officials. The WFTDA remains committed to consistency and standardization, as well as providing the tools and resources so that all roller derby referees may succeed in providing the highest level of officiating to promote the ideal of 'Real, Strong, Athletic, and Revolutionary' roller derby.

II. Target Audience

The WFTDA Introductory Clinic will be open to all roller derby referees, regardless of affiliation. The clinic is aimed to provide the fundamentals in skating, theory, consistency, and certification.

The Advanced WFTDA Clinic will be a definitive educational experience, strongly recommended for all WFTDA affiliated or certified referees who hope to participate in the WFTDA Big 5 tournament season. Like the Introductory Clinic the Advanced clinic will fortify participants' knowledge in skating skills and positioning, theory, tournament consistency, as well as providing the tools to assist in the Referee Certification climb.

The WFTDA is also holding open the possibility of targeting audiences in international markets, these potential international clinics would hold to the same guidelines and benefits as the WFTDA Introductory Clinics.

III. Objectives

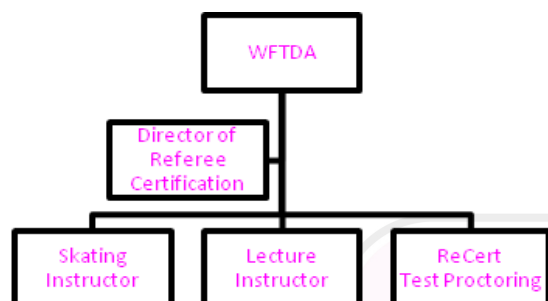
- Promotion of consistency in theory and application
- Increase skating skills
- Tournament preparedness
- Referee Certification preparedness and proctoring
- Increased crew efficiency and integration

IV. Project Details

The WFTDA aims to have two (2), two-day long, camps per region in the 2011 Referee Clinic cycle, spanning from June 1st, 2011 until September 1st, 2011. Per region the WFTDA hopes to provide one Introductory and one advanced class. The ideal camp size is 150 participants for the Introductory class and 50 participants for the Advanced class. Camps are designed to start at a reasonable time on Saturday and end in the evening of Sunday, allowing participants to make weekend travel accommodations.

There is also flexibility in the Referee Clinic cycle for clinics attached to other WFTDA recognized events (i.e. multi bout weekends) and international clinics. If your member league could host a clinic under these more flexible circumstances please contact Sarah Hipel at Killbox.sarah@gmail.com for details on bidding.

Team Organization:



V. Budget and Financial Obligations

- The WFTDA will provide each hosting member league with two thousand dollars, for venue rental and volunteer resources.
- WFTDA will cover insurance chartering for the venue and WFTDA affiliated referees. Those referees with USARS insurance will have to pay the USARS standard fee of \$18 for a day pass.
- The WFTDA will also select and provide instructors, and cover their transportation and lodging.
- Technology of print/scan/fax has proved it be a challenge in the past. This year with the addition of Referee Certification test proctoring, the hosting member league will need to collaborate with WFTDA to design a simple system to upload all documentation real time.

VI. Schedule/Implementation Plan:

- Open bidding for member leagues to host a WFTDA Referee Clinic will begin February 9th, 2011. WFTDA Referee Instructors open call will begin on February 27, 2011.
- Instructor selection deadline is March 21, 2011.
- Clinic locations will be announced on April 1, 2011 (no foolin'!).
- The Referee Clinic curriculum will be beta tested at the WFTDA annual conference in May 2011.
- The Referee Clinic cycle will run from June 1 until September 1, 2011. There will be leeway for potential clinics to be held in the second half of May.

VI. Resources Provided by WFTDA

- Instructors and curriculum
- Proctoring of Referee Certification skating and written tests
- Logistics/planning assistance
- WFTDA employee and instructor travel coordination
- Insurance Administration
- Print list and electronic documents (administrative, referee certification, curriculum)

VII. Criteria for Evaluating Success of the Training

- Reporting from the Director of Certification
- Attendance
- Participant feedback

VIII. Criteria for Selecting a Vendor

- Availability of WFTDA standard tracks (according to WFTDA Rules) and arrangement (according to the Referee Committee Standard Track Layout)
- Hotel room rates at or around \$99 a night, and the ability to coordinate hotel blocks
- Available hosting dates that do not conflict with local or other WFTDA events
- Ease of travel to hosting city
- Ability to provide transportation for camp participants
- Print/scan/fax and potentially video capabilities
- Ability to provide 5 worker bees/volunteers
- Ability to coordinate lunch for camp participants
- Venue accommodations able to host the target number of participants, 140 for the Introductory clinic and 50 for the Advanced clinic

IX. Requests for Vendor Suggestions/Creativity

The WFTDA would like to encourage creativity among potential hosting leagues, if you have a service or ideas not listed please include them in your bid. If the hosting member league needs flexibility in camp start/stop times please include that in this section.

HOW TO SUBMIT

Send questions and complete proposals to:

Sarah Hipel

Killbox.sarah@gmail.com

All proposals must be received by March 21, 2011. Bids will be reviewed as they are received.

